



# FRESNO CONVENTION & Entertainment Center

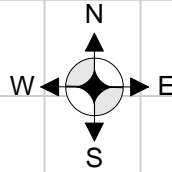


## Selland Arena

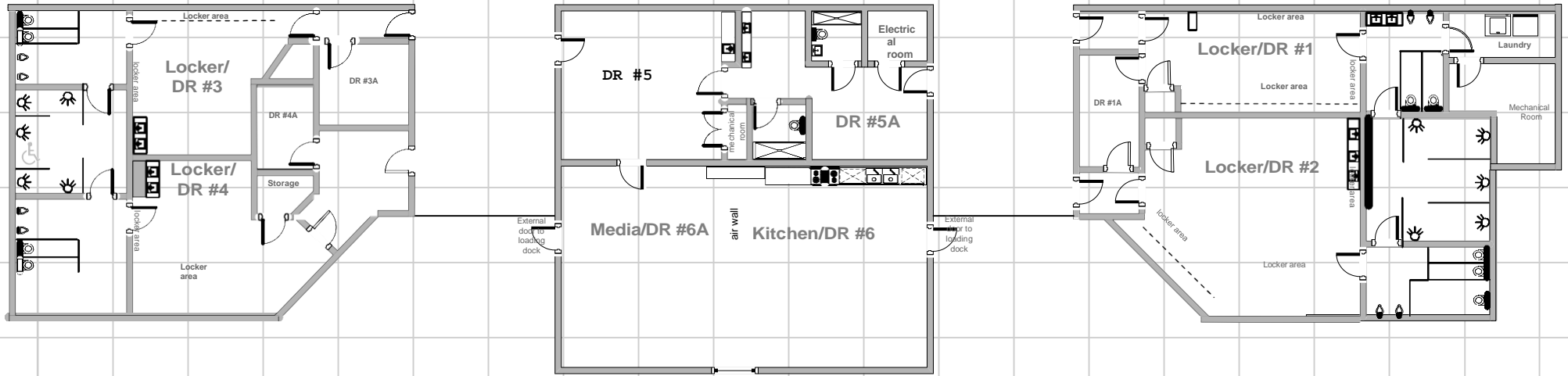
<b>Door Info:</b>			
General Admission	Yes	Reserved seats	Yes
Balcony	Yes	Portable Seats	Yes
<b>Stage Info:</b>			
Portable Stage	Heights 48"-72" / 4'x8' sections		
House Curtain	Yes – rear drape 105'w x 40'h on 12" truss w/motors		
Access	Truck load in on south end ramp, down to area (floor level), up to exit (street level), drive through. Two load-in doors, 14'x14', one truck can load at once, trucks can get 50' from stage.		
Maximum Width	80' including wings, 10' - 14' fire aisles SR & SL		
<b>Power Distance From U.S. Center</b>			
Service #1:	2 - 400 amp, 3 phase with earth ground, separate transformer		
Location	USR – 50' from stage		
Service #2:	100 amp, 3 phase with earth ground, not on separate transformer		
Location	USR – 50' from stage		
Service #3:	200 amp, 3 phase DSR with water pipe ground, separate transformer		
Location	130' from SR on east wall near section #15 stairway		
Service #4:	200 amp, 3 phase with earth ground		
Location	@T.V. cut-out, parking lot, east side of Arena and in parking lot south		
Service #5:	100 amp, 3 phase, shared with other loads plus three (3) 50-amp single phase plugs		
Shore Power Location	@T.V. cut-out, parking lot, east side of Arena and in parking lot south		
<b>Lighting Info</b>			
House Lights Location	Control booth, eastside above balcony seats. Operated by Union electrician.		
House Lights Control	Manual switches		
House Lamps Are	LED		
Total House Blackout	No	Stage Lighting Available	No
Additional Note	Advertising panels illuminated and can be turned off.		

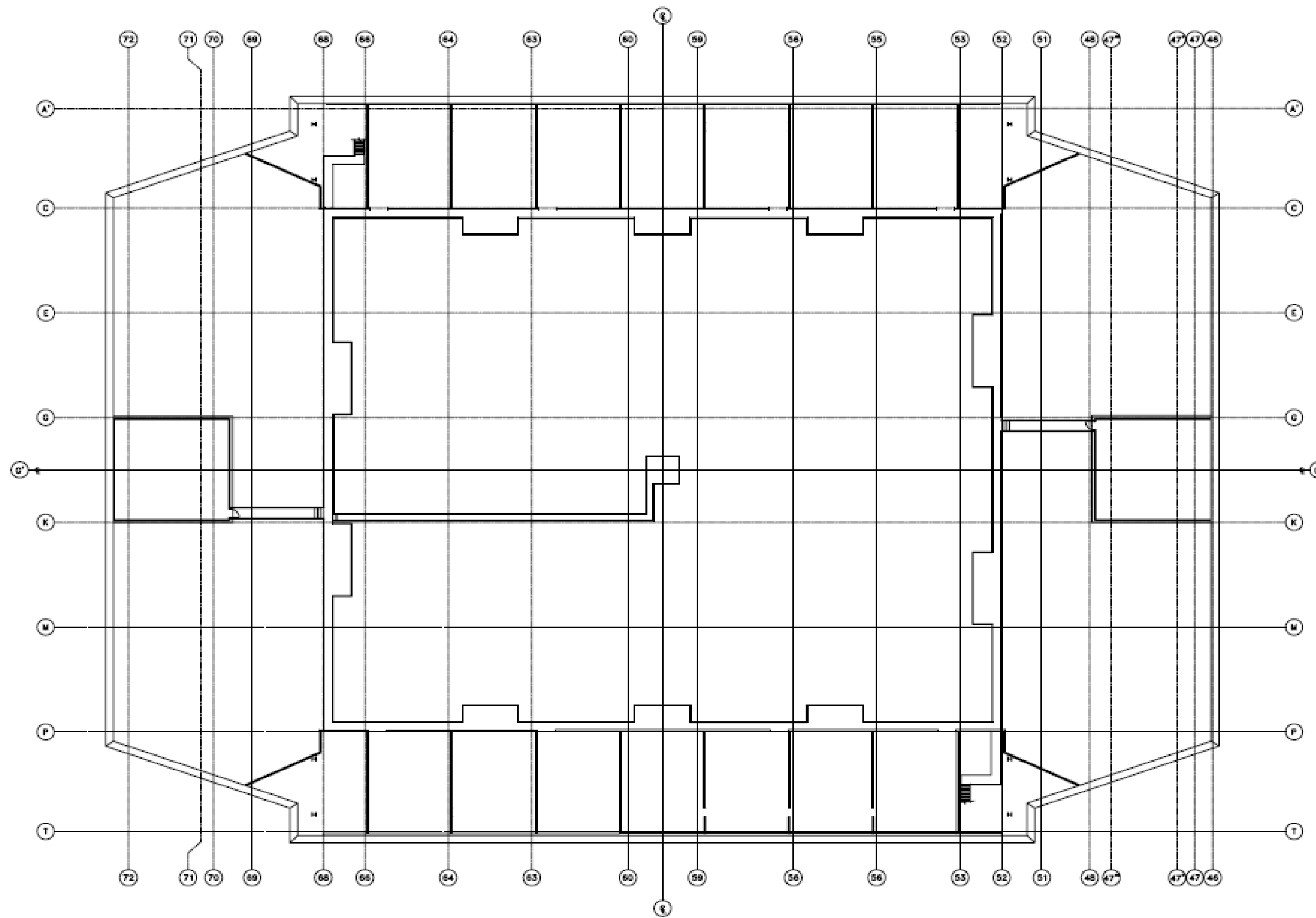
<b>Spotlight Info</b> (Multiple follow spot positions)	
Throw to Stage Max	200'
Throw to Stage Min	80'
Type Available	8 - 200k Super Troopers available to rent.
Location #1	Various locations around Arena catwalk.
House Intercom Type	Clear-com
Cabled	Yes
<b>Sound Info</b>	
Type	P.A. (fixed)
Location	Center house above scoreboard
<b>Dressing Room Info</b>	
Dressing Rooms Available	Five dressing rooms, one production office, one media/green room, one kitchen area
Bathrooms	(2) Private bathrooms w/showers, (2) team shower areas.
Location	U.S.R. & U.S.L. South end of Arena, next to loading area.
Furniture	Limited. Flat screen TV available in Green Room & Production Room
<b>Rigging Info</b>	
Floor Dimensions	<b>Length:</b> 220'; <b>Width:</b> 120'
Distance:	
Grid to Floor	58' – 2" to bottom of beam
Grid to Ceiling	16' +/- from bottom of beam to top of high steel cord at ceiling
Grid dimensions	Primary beams north/south on 38' centers. Secondary beams east/west on 28' centers.
Type of Ceiling	Open beam
Rigging Access	Catwalk along perimeter and to scoreboard platforms/stairs
Weight Limits	If maximum rigging weight exceeds 30,000 lbs., then we must forward a detailed rigging plot to our local engineer. A fee of \$600.00 will be added to the bill of the licensee for this service.
Bridling	Bridling is allowed only on the primary beams which run north/south. (No upstage, down stage bridling allowed on secondary beams running east/west).
Rigging Plot	A rigging plot of legible weights must be forwarded to the Event Manager at least <i>three weeks prior</i> to the engagement.
Rigger Walk Beam	Yes with fall arresters and safety line
Scoreboard info	Located center house , <b>Width:</b> 22' 10"; <b>Height</b> (top to bottom with both pieces) 15' 10"; <b>Top Section:</b> 22' 10" wide and 8'9" high; <b>Bottom Section:</b> 17' wide and 6' 7" high; From floor to bottom of existing scoreboard: 33' 5"
Scoreboard location	90' from South wall – Center house
<b>Rigging Info</b>	
(2) Forklifts Available	(1) 3,400 lbs., ht. Limit 16', (1) 6,000 lbs., ht. Limit 15 ½', Union Operator
Truck Parking	South end of parking lot located at the corner of "O" Street and Ventura Street

Bus Parking	South end of parking lot located at the corner of "O" Street and Ventura Street
Laundry Service	N/A
Hotel	Double Tree Hotel (559) 268-1000
Airport Location	5175 East Clinton Way (five miles from Convention Center).



## Selland Arena at the Fresno Convention and Entertainment Center



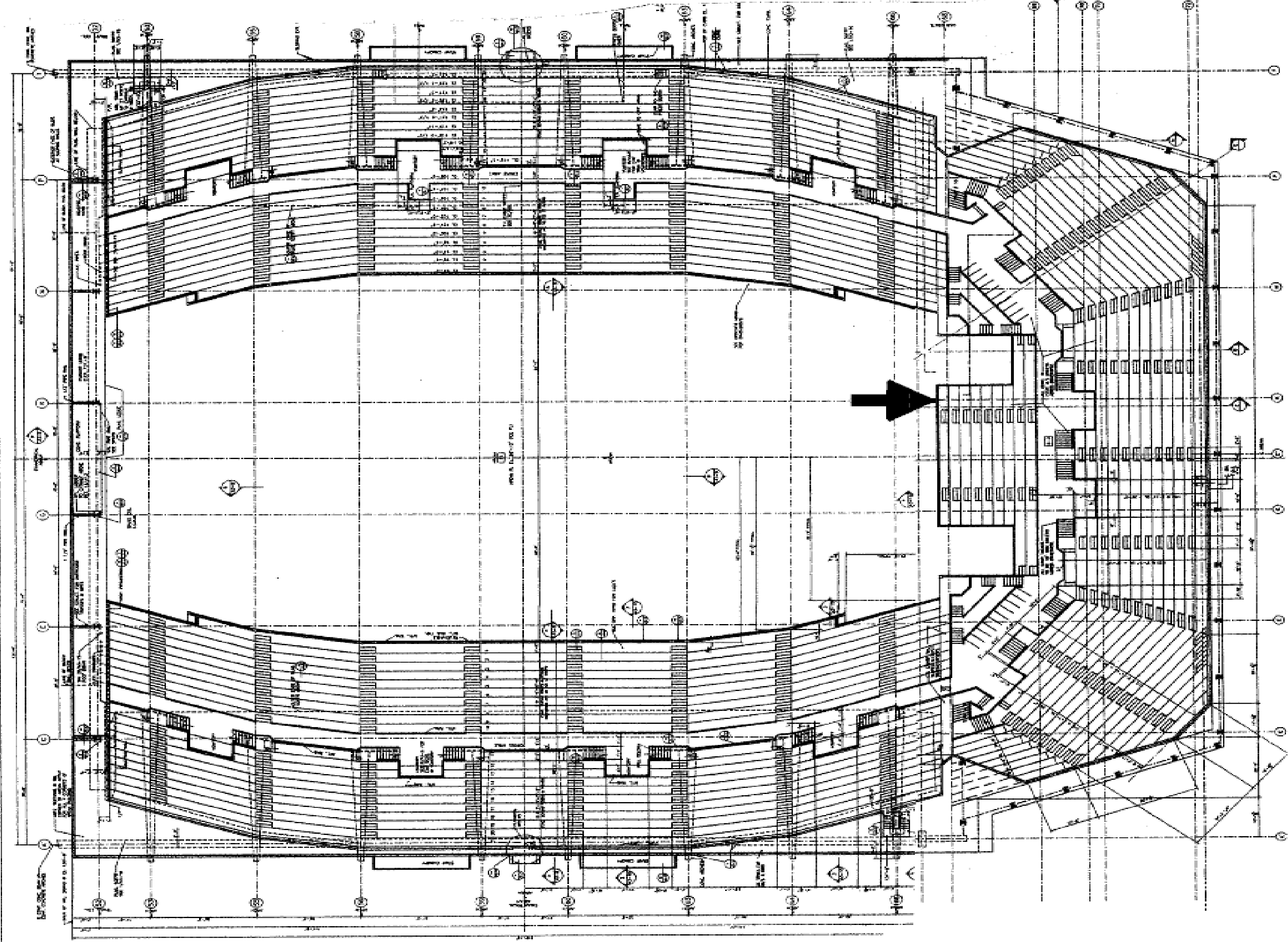


CATWALK LEVEL FLOOR PLAN (146'-7")

MECHANICAL ROOM FLOOR PLAN (145'-0")



	ROBERT STEVENS ASSOCIATES 770 EAST SHAW AVE. FRESNO, CA, 93710 209 • 224 • 1111 ARCHITECTURE & PLANNING <small>Copyright © 19 Robert Stevens Assoc.</small>		C-854 C,D,P, #4,3 Date by 1/2/2004 2/ 800 of sheets
	<b>A-15</b>		



SELLAND ARENA SEATING & EVENT LAYOUT PLAN